



## Rolling Grills

See-through protection

Rolling Grills are ideal for retail shop fronts windows, pavilions:

- And shopping centres and galleries
- Supermarkets
- Underground garages and parking areas
- Restaurants and bars
- Offices and commercial premises



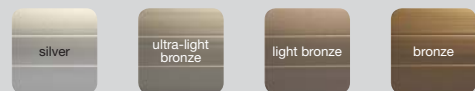
### Colours

Roller grills can be powder-coated special colours or anodized. A variety of colours and designs allows to find the best match with the design of your building facade and interior.

#### POWDER-COATED STANDARD COLOURS



#### ANODIZING COLOURS



Rolling Grilles are ideal for shop fronts and windows, shopping centre pavilions and galleries, supermarkets, underground garages and parking areas, restaurants and bars, offices and commercial premises.

Any modern shopping center, as a commercial outlet, contains significant quantities of valuable stock. Protection of this stock is a priority!

Locks, signaling systems or heavy metal bars may be the solution in some situations but a trading outlet depends on being aesthetically appealing in order to be able to merchandise its products 24 hours a day including weekends and holidays.

The solution to this problem is - The Rolling Grille. Elegantly designed, rolling grilles blend in with the architecture of the building as well as the interior of shopping centres, supermarkets and other commercial premises.

The Rolling Grille can be powder coated in a whole range of colours to match or compliment the main facade, windows or other shop front decor.

Conversely, it can serve as the main feature, repeating corporate logos or colour schemes.



- Strong extruded aluminium profile provides a high level of burglary protection
- A reinforced grill option is available



- Suitable for both internal and external installation
- Perfect light transmission and ventilation



- Punched profiles allow your potential customers to window shop 24/7



- Can be powder coated or anodized
- Strong durable finish in a wide choice of colours to blend in with any colour scheme



- Different operation types: rod crank, spring, motor



- Fire safe, can be quickly raised providing an evacuation way out
- Can be connected to fire signal sensors and open automatically if needed

AEG 56

AEG 84



rolling grills

# Aluminium roller grills elegant protection of your interests

**TECHNOPARK®**  
www.technopark.cz

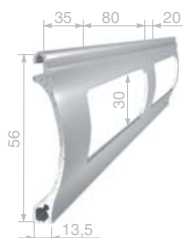


## AEG 56

**AEG 56** - lightweight, very compact, and beautifully designed, AEG 56 is ideal for small and medium-sized boutique windows and desk fronts

- Max size: width up to 3000 mm
- Can be combined with solid profile for higher security, partial vision or specific design
- Max size of the reinforced shutter: 4500 mm wide, 13.5 sq.m
- 42% Visibility
- Very compact coiling
- Special retainer profile joining the axle with curtain provides protection against unapproved lift of a closed grill

### AEG 56



Aluminium extruded punched profile. Used with AEG 30/S for wider openings or special decor.

### AEG 30/S



Reinforcement profile. Used with AEG 56.



## AEG 84

**AEG 84** - combined with reinforcement AEG 45/S profile, AEG 84 grill can be installed up to 7000 mm at trade shows, pavilions at commercial and industrial premises

- Max size: width up to 5500 mm
- Can be combined with solid profile for higher security, partial vision or specific design
- Max size of the reinforced shutter: 7000 mm wide, 21 sq.m
- 47% Visibility
- Has the same pattern as AEG 56, so can be used together at one site for various size openings to ensure the same design
- Compact coiling
- Special retainer profile joining the axle with curtain provides protection against unapproved lift of a closed grill

### AEG 84



Aluminium extruded punched profile. Can be used with AEG 45/S for wider openings or special decor.

### AEG 45/S



Reinforcement profile. Used with AEG 84.



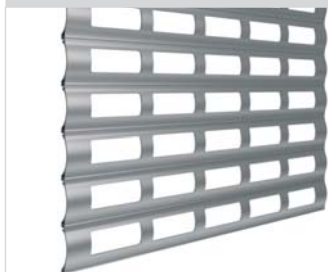
### Curtain option for AEG 56 and AEG 84

1

3+1

2+1

1+1



Combination of profiles		Max width, mm	Max area, sq.m
<b>AEG 56</b>			
1	AEG56	3 000	7,5
3+1	3 AEG 56 + 1 AEG 30/S	3 500	
2+1	2 AEG 56 + 1 AEG 30/S	4 000	
1+1	1 AEG 56 + 1 AEG 30/S	4 500	13,5
<b>AEG 84</b>			
1	AEG84	5 500	16,5
3+1	3 AEG 84 + 1 AEG 45/S	6 000	
2+1	2 AEG 84 + 1 AEG 45/S	6 500	
1+1	1 AEG 84 + 1 AEG 45/S	7 000	21,0